

Avoiding false positives during video inspection



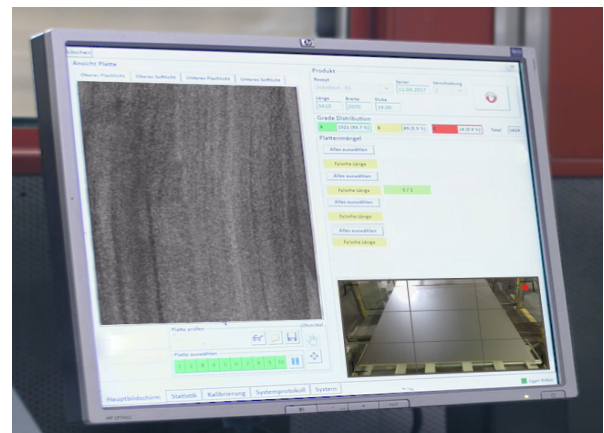
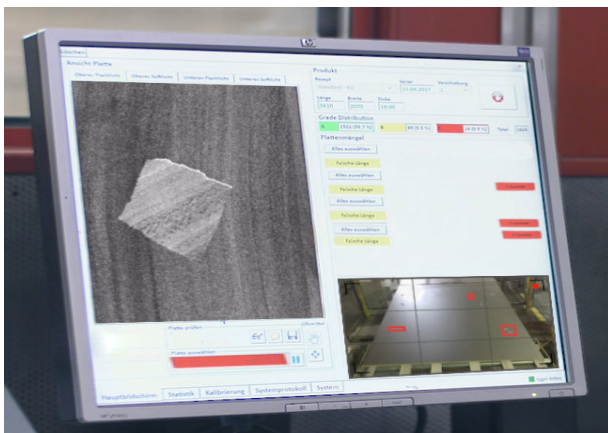
Starting position

- Direct-coated chipboards, some bent or with bursts
- After trimming, large amounts of tinsel and chips cling to the boards
- False positives and substantial rejection rates during video inspection
- Panels get damaged during stacking

Result



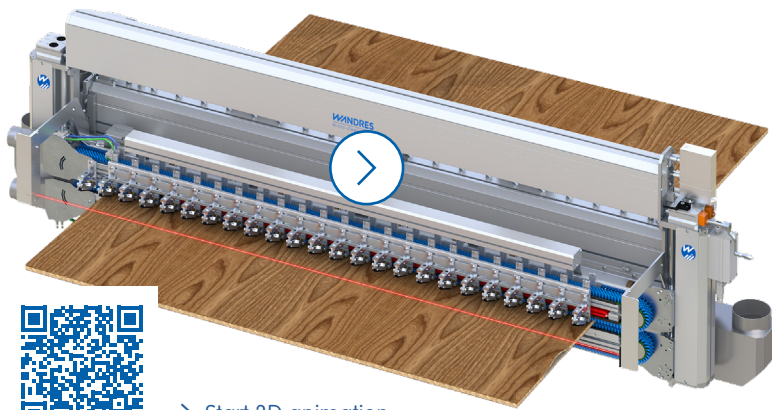
- Perfect cleaning of boards
- Reliable video inspection
- Considerable drop in rejection rates
- Improved product quality
- Clean production environment



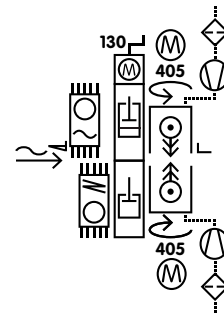
Customer's opinion

“That is the best cleaning system I have ever seen. Due to the new cleaning system, trimmed boards pass the video inspection without problems. The implementation of this solution has been so successful that the same type of machine was integrated in further short cycle presses in the meantime..”

Combi Sword Brush Una H-XFT 621

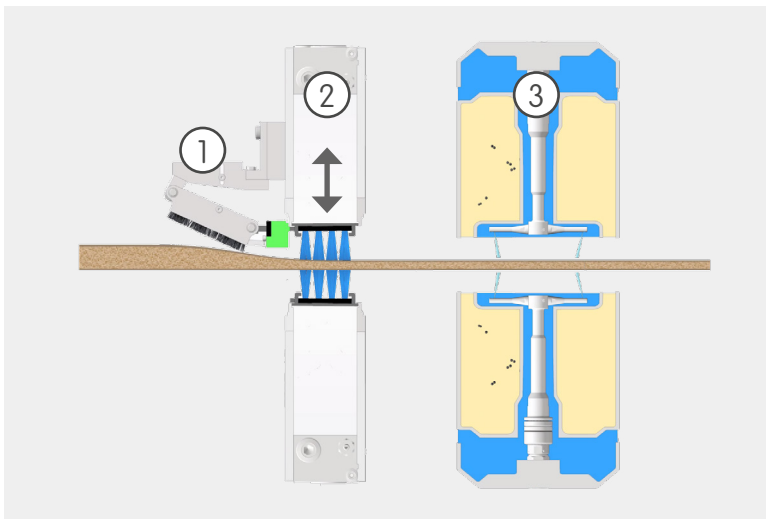


→ Start 3D animation



- Perfect cleaning results even with uneven surfaces
- Best solution for direct-coated chipboards
- Reproducible results in continuous industrial applications

At the infeed of the machine, two Sword Brushes wipe transversally across the boards. Tactile control elements lift the upper Sword Brush module (type BIFT 51) if surfaces are uneven or have bursts. At the outfeed, a Tornado Channel TKRB 405 cleans the boards with compressed air from above and from below.



Cleaning technology

- ① Tactile control element
- ② Sword Brush with flexible pressure buffer
- ③ Tornado Channel



WANDRES
micro-cleaning

www.wandres.com

Germany +49 7661 9330-0 | sales@wandres.com

USA +1 734 214 9903 | sales@wandresusa.com

China +86 21 68520069 | china@wandres.com